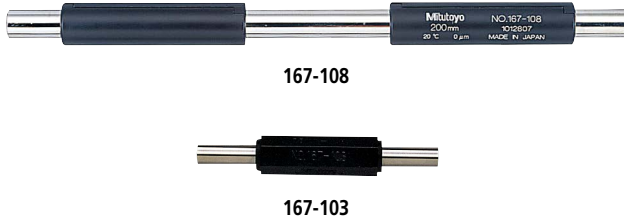


Micrometer

The origin of Mitutoyo's trustworthy brand of small tool instruments

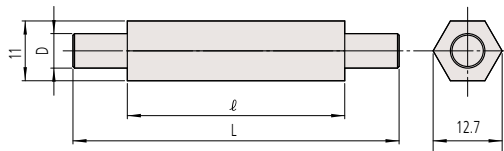
Setting Standards for Outside Micrometers SERIES 167

- Used for adjusting the reference point of outside micrometers.



SPECIFICATIONS and DIMENSIONS

167-101 to 167-103
167-141 to 167-143

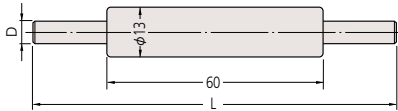


Unit: mm

Metric				
Order No.	Length $\langle L \rangle$ (mm)	Tolerance (μm)	ℓ (mm)	Diameter $\langle \phi \rangle$ (mm)
167-101	25	± 1.5	18	6.35
167-102	50	± 2.0	40	
167-103	75	± 2.5	40	

Inch				
Order No.	Length $\langle L \rangle$ (in)	Tolerance (in)	ℓ (mm)	Diameter $\langle \phi \rangle$ (in)
167-141	1	± 0.00005	18	0.25
167-142	2	± 0.0001	40	
167-143	3	± 0.0001	40	

167-104 to 167-107
167-144 to 167-147

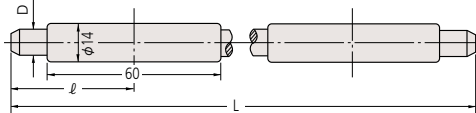


Unit: mm

Metric			
Order No.	Length $\langle L \rangle$ (mm)	Tolerance (μm)	Diameter $\langle \phi \rangle$ (mm)
167-104	100	± 3	7.9
167-105	125	± 3.5	
167-106	150	± 4	
167-107	175	± 4.5	

Inch			
Order No.	Length $\langle L \rangle$ (in)	Tolerance (in)	Diameter $\langle \phi \rangle$ (in)
167-144	4	± 0.0001	0.31
167-145	5	± 0.00015	
167-146	6		
167-147	7		

167-108 to 167-119
167-148 to 167-159



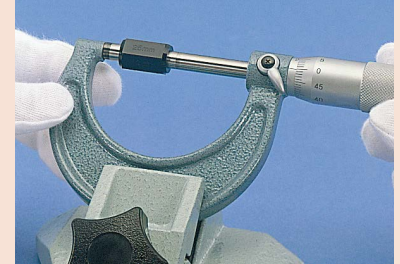
Unit: mm

Metric				
Order No.	Length $\langle L \rangle$ (mm)	Tolerance (μm)	ℓ (mm)	Diameter $\langle \phi \rangle$ (mm)
167-108	200	± 5.0	47	9.4
167-109	225	± 5.5	47	
167-110	250	± 6.0	52	
167-111	275	± 6.5	57	
167-112	300	± 7	64	
167-113	325	± 7.5	69	
167-114	350	± 8	74	
167-115	375	± 8.5	80	
167-116	400	± 9	85	
167-117	425	± 9.5	90	
167-118	450	± 10	95	
167-119	475	± 10.5	101	

Inch				
Order No.	Length $\langle L \rangle$ (in)	Tolerance (in)	ℓ (mm)	Diameter $\langle \phi \rangle$ (in)
167-148	8	± 0.00015	47	0.37
167-149	9	± 0.0002	47	
167-150	10	± 0.0002	52	
167-151	11	± 0.0002	57	
167-152	12	± 0.00025	64	
167-153	13	± 0.00025	69	
167-154	14	± 0.00025	74	
167-155	15	± 0.00025	80	
167-156	16	± 0.00025	85	
167-157	17	± 0.00025	90	
167-158	18	± 0.00025	95	
167-159	19	± 0.0003	101	

Technical Data

- Flatness: 0.3 μm
- Parallelism: 2 μm



Micrometer Inspection Gauge Block Set

Refer to page E-11 for details.

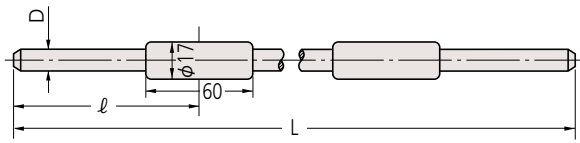


516-152/153/154



Micro Checker (holder only)
516-607

167-120 to 167-404
167-160 to 167-180



Unit: mm

Metric				
Order No.	Length $\langle L \rangle$ (mm)	Tolerance (μm)	ℓ (mm)	Diameter $\langle D \rangle$ (mm)
167-120	500	± 11	106	0.47
167-121	525	± 11.5	112	
167-122	550	± 12	117	
167-123	575	± 12.5	122	
167-124	600	± 13	128	
167-125	625	± 13.5	133	
167-126	650	± 14	138	
167-127	675	± 14.5	142	
167-128	700	± 15	147	
167-129	725	± 15.5	153	
167-130	750	± 16	158	11.9
167-131	775	± 16.5	164	
167-132	800	± 17	170	
167-133	825	± 17.5	175	
167-134	850	± 18	180	
167-135	875	± 18.5	185	
167-136	900	± 19	191	
167-137	925	± 19.5	196	
167-138	950	± 20	201	
167-139	975	± 20.5	207	
167-140	1000	± 21	211	11.9
167-365	1025	± 21.5	217	
167-366	1050	± 22	222	
167-367	1075	± 22.5	227	
167-368	1100	± 23	232	
167-369	1125	± 23.5	238	
167-370	1150	± 24	243	
167-371	1175	± 24.5	248	
167-372	1200	± 25	254	
167-373	1225	± 25.5	259	
167-374	1250	± 26	264	
167-375	1275	± 26.5	269	
167-376	1300	± 27	275	
167-377	1325	± 27.5	280	
167-378	1350	± 28	285	
167-379	1375	± 28.5	291	
167-380	1400	± 29	296	
167-381	1425	± 29.5	301	
167-382	1450	± 30	306	
167-383	1475	± 30.5	312	
167-384	1500	± 31	317	
167-385	1525	± 31.5	322	
167-386	1550	± 32	328	
167-387	1575	± 32.5	333	
167-388	1600	± 33	338	
167-389	1625	± 33.5	343	
167-390	1650	± 34	349	
167-391	1675	± 34.5	354	
167-392	1700	± 35	359	
167-393	1725	± 35.5	364	
167-394	1750	± 36	370	
167-395	1775	± 36.5	375	
167-396	1800	± 37	380	
167-397	1825	± 37.5	386	
167-398	1850	± 38	391	
167-399	1875	± 38.5	396	
167-400	1900	± 39	401	
167-401	1925	± 39.5	407	
167-402	1950	± 40	412	
167-403	1975	± 40.5	417	
167-404	2000	± 41	423	

Inch				
Order No.	Length $\langle L \rangle$ (in)	Tolerance (in)	ℓ (mm)	Diameter $\langle D \rangle$ (in)
167-160	20	± 0.0003	106	0.47
167-161	21	± 0.0003	112	
167-162	22	± 0.0003	117	
167-163	23	± 0.0003	122	
167-164	24	± 0.0003	128	
167-165	25	± 0.00035	133	
167-166	26	± 0.00035	138	
167-167	27	± 0.00035	142	
167-168	28	± 0.00035	147	
167-169	29	± 0.00035	153	
167-170	30	± 0.00035	158	11.9
167-171	31	± 0.00035	164	
167-172	32	± 0.00035	170	
167-173	33	± 0.00035	175	
167-174	34	± 0.00035	180	
167-175	35	± 0.00035	185	
167-176	36	± 0.00035	191	
167-177	37	± 0.0004	196	
167-178	38	± 0.0004	201	
167-179	39	± 0.0004	207	
167-180	40	± 0.0004	211	

Note: Available up to 79 in