

Measurement Data Management

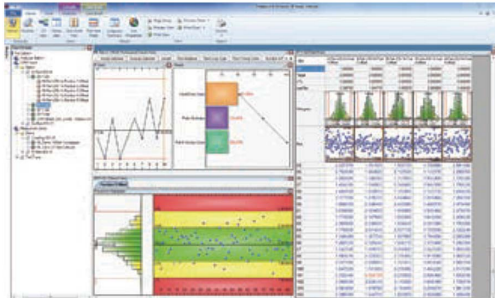
Convenient data collection tool and quality control software

MeasurLink Optional Process Analysis Software for Administrators Process Analyzer Professional (PA Pro)

Process Analyzer is an optional software package provided for administrators who are authorized to access the database storing measurement data collected by MeasurLink **Real-Time** for the purpose of checking and analyzing measurement results.

• **PA Pro** is a full-spec package that provides additional data check and analysis capability.

Can also perform various analyses by filtering, data processing, etc., in addition to data checking.



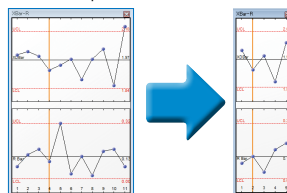
The same data displayable by data collection software can be displayed, including measurement results, charts, and statistical calculation results with the look and feel of Windows Explorer.

• Filtering function that allows data extraction and grouping

Data can be extracted or grouped by selecting the date and time and other traceability information as keywords.

Example) Filtering data by an operator name Displays statistical analysis result in charts (Xbar-R, for example).

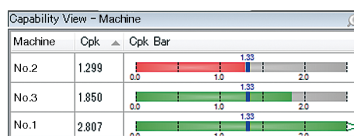
Filtering item selection menu



Result of filtering in the chart

Example) Grouping by Machine No. Cp, Cpk comparison

Item selection for grouping



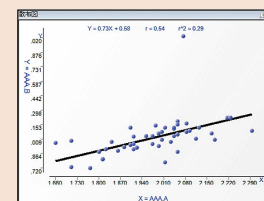
Cpk value and bar graph per machine

PA Pro Functions

- Result display
 - Classic SPC view
 - Data sheet
 - 2D view
 - Parts data sheet, etc.
- Statistical Analysis result [Chart]
 - Xbar-R, Xbar-S, X-Rs control charts, Histogram, Run chart, Pre-control chart, Tear chart, Box plot chart, Meter chart, Indicator bar, multivariate data control chart, etc.
- [Statistics]
 - Maximum value, Minimum value, Standard deviation, Average $\pm 3\sigma/4\sigma/6\sigma$, Process capability indexes (Cp, Cpk, Pp, Ppk), Defect ratio, etc.
- Report print out function
 - Measurement values, analysis calculation results and various charts can be arranged to output according to requirements.
- Exporting function of measurement result
 - Excel format
 - CSV format

PA Pro Functions

- Statistical analysis result [Chart]
 - Scatter plots: The relationship between two items can be plotted.



- Filter function
 - Keyword items for data extraction
 - Measurement data (year, month, day, time, week, etc.)
 - Serial No.
 - Traceability information (e.g. Inspectors, Machine No., etc.)
 - Alarm item
- Data processing
 - Data file merging, Copying
 - Editing
- Data processing capability
 - Old data can be displayed extracting from the list of the data collection software.
- Electronic certification function
 - Conforms to FDA 21CFR PART11

Function	Process analysis software	
	Process Analyzer Professional	
Result display	Classic SPC view	✓
	Data sheet	✓
	2D view	✓
Data extract	Filter	✓
Data processing	Data file merging, Copying, Editing	✓
Masking	Archive data	✓