

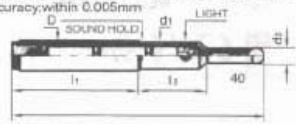
Touch Point Sensor With beeper



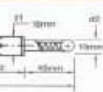
- The red lamp with setting red glue, it can concentrate light and resist water.
- It will give up beep sound at the same time when the red lamp light up.
- When work lamp light up to be incidence visual sense, it can be probe by the beep sounder.
- It can be sound due in the reverse side and can't seeing of the aide.
- When probe the deep hole while you can't see the red light, but you can hear the sound by the sounder.
- Accuracy: within 0.005mm

OPTICAL TYPE

ORDER NO.	D	d1	d2	L	l1	l2	BATTERY TYPE	WEIGHT	CODE NO.
VPS-29B	φ20	16	16	190	76	41	UM-9K(SP)	0.33kg	3402-001
VPS-32B	φ32	16	16	190	76	41	x2PCS	0.6kg	3402-002



Touch Point Sensor Optical Type

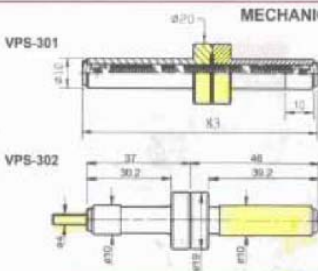


OPTICAL TYPE

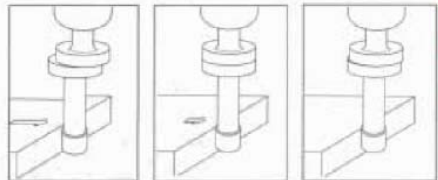
ORDER NO.	D	d1	d2	L	l1	l2	BATTERY TYPE	WEIGHT (kg)	CODE NO.
VPS-29	20	16	16	167	71	35	UM-9K(SP)	0.35	3402-003
VPS-32	32	16	16	157	71	41	x 2PCS J1.6V	0.6	3402-004

- High sensitivity location sensor.
- Red pilot can be seen clearly.
- Whole travel of red pilot is sparking, detecting also can be done during turning while spindle stops.
- Location of end surface, outside circle dia., inside circle dia. of the workpiece for processing can be detected with full effect.
- Devised with safety line excess, ball supported by spring, so even line excess, it will be separated easily from the base shown as the fig. The precision to return to its original position will reach up to micrometer.

Touch Point Sensor MECHANICAL TYPE



- Accuracy of zero point to point is within 0.003mm.
- R.P.M. within 450-600.
- Max. flange can be clear your sight sense.
- MIN. (4mm) can be test mini hole for your workpiece.



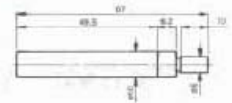
Spindle runs about 500rpm, move spindle closed to measuring surface.
 When measuring probe touches workpiece, it looks in one part.
 When the probe and shank are in alignment, probe will slide out of rotating center. Now, the center spindle is located 5mm away from measuring surface.

ORDER NO.	MATERIAL	HARDNESS	WEIGHT (kg)	CODE NO.
VPS-301	ALLOY	HRC 56°	0.03	3402-100
VPS-302	STEEL	HRC 56°	0.03	3402-101
VPS-301S	STAINLESS	HRC 60°	0.03	3402-102
VPS-302S	STAINLESS	HRC 60°	0.03	3402-103
VPS-301C	CERAMIC	HRC 80°		3402-104
VPS-302C	CERAMIC	HRC 80°		3402-105

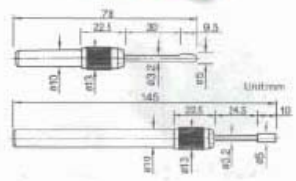
MECHANICAL TYPE SIMPLE TYPE DELUXE TYPE



ORDER NO.
 VPS-201
CODE NO.
 3402-005
WEIGHT:
 0.01kg



ORDER NO.
 VPS-401
(2PCS/SET)
CODE NO.
 3402-006
WEIGHT:
 0.18kg



The series is a high precision setting device for positioning the accurate center between tool spindle of machine and reference surface of working at low-cost and saving time.
 Accuracy : within 0.005 mm
 Made of tool steel, hardened and ground.
 Suitable rotation speed : VPS-201-450 to 600rpm.
 VPS-401-600 to 1,000 rpm