

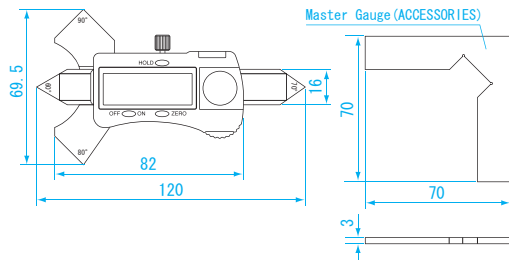
DIGITAL WELDING GAUGE

Essential for welding process. Digital welding gauge specialized for measuring fillet weld and bead weld height
 Provided with zero setting master gauge



DIMENSIONS

Units : mm



USE • For measuring the size of fillet weld and bead weld

MATERIAL

- Stainless steel

FEATURES

- Easy to read with digital display
- Bevel angle: 60° , 70° , 80° , 90°
- Master gauge included
- Hold function

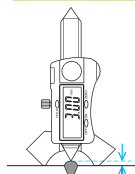
SPECIFICATIONS

- Throat thickness : 20mm
- Bead height : 10mm
- perating temperature : 0 ~ 40°C

POWER

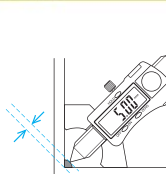
- SR44 or LR44, one included for testing

Weld reinforcement height measurement

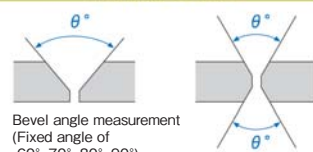


Bead Height
Maximum measurement 10mm

Measurement before welding process



Throat thickness
Maximum measurement 20mm



Bevel angle measurement
(Fixed angle of 60°, 70°, 80°, 90°)

Order No.	Model No.	Resolution (mm)	Accuracy※ (mm)	Weight
007526	DWG-20G	0.01	± 0.03	130g

※ Quantization Error (± 1 digit) not included

BLOCK GAUGES

PIN GAUGES

PIN VISE

PIN GAUGE ACCESSORIES

WELDING GAUGE

GAUGES

THREAD GAUGES

PLUG GAUGES

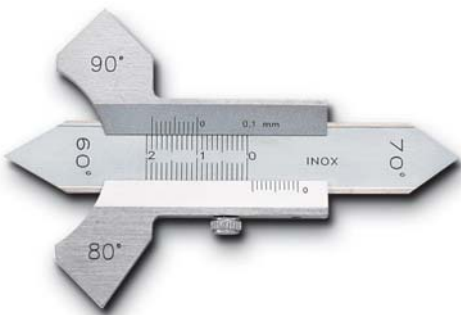
RING GAUGES

THICKNESS GAUGES

TAPER GAUGES

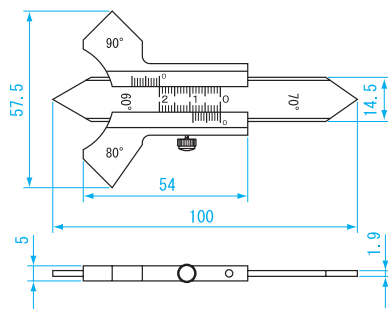
WELDING GAUGES

OTHER GAUGES



DIMENSIONS

Units : mm



USE • Use for measuring the size of fillet weld and bead weld

MATERIAL

- Stainless steel

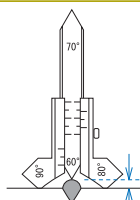
FEATURES

- Bevel angle: 60° 70° 80° 90°

SPECIFICATIONS

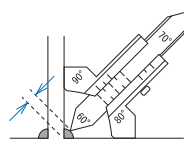
- Fillet weld : 11mm
- Bead weld : 8mm
- Accuracy: ± 0.2mm
- Minimum reading : 0.1mm

Weld Bead Measurement

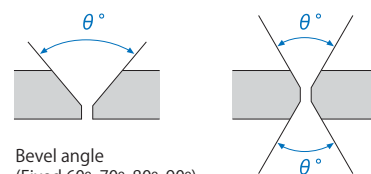


Bead height
Maximum measurement 8mm

Measurement Before Welding



Throat thickness
Maximum measurement 11mm



Bevel angle
(Fixed 60°, 70°, 80°, 90°)

Order No.	Model No.	Weight
007516	AWG-10	80g