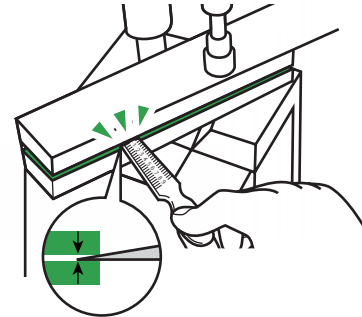




TAPER GAUGES



Graduation shows the gap width



- USE** • Measurement of groove and gap etc.
- MATERIAL** • Machine grade carbon steel (S55C), not hardened
- FEATURES** • Use the thickness of taper to measure the gap width
• Packed in plastic carrying case
• Accuracy $\pm 0.04\text{mm}$ • Satin finish

Order No.	Model No.	Standard	Measuring Range (mm)	Accuracy (mm)	Graduation (mm)	Taper Angle	Full Length (H) × (W) (mm)	Weight
007000	TPG-270A	270A	0.3~4	± 0.04	0.05	1°54'33"	160×11	95g
007001	TPG-270B	270B	0.4~6	± 0.04	0.05	2°51'45"	160×11	95g

BLOCK GAUGES

PIN GAUGES

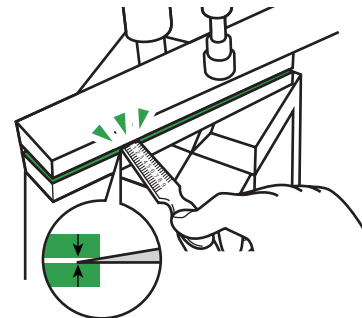
PIN VISE

PIN GAUGE ACCESSORIES

TAPER GAUGES



Graduation shows the gap width



- USE** • Measurement of groove and gap etc.
- MATERIAL** • Machine grade carbon steel (S55C), not hardened
- FEATURES** • Use the thickness of taper to measure the gap width, also can use as height adjustment jig
• Narrow width type
• Satin finish
• Packed in plastic carrying case
• Ball chain attached

Order No.	Model No.	Standard	Measuring Range (mm)	Accuracy (mm)	Graduation (mm)	Taper Angle	Full Length (H) × (W) (mm)	Weight
007002	TPG-270AA	270AA	0.3~3	± 0.04	0.05	1°54'33"	127.5 × 6	18g
007003	TPG-270BB	270BB	0.3~6	± 0.04	0.05	2°51'45"	160 × 6	38g

GAUGES

THREAD GAUGES

PLUG GAUGES

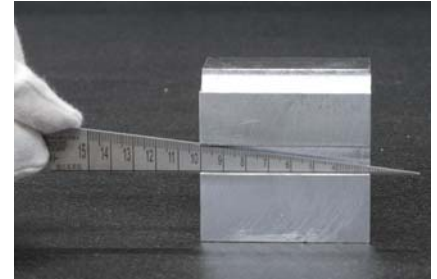
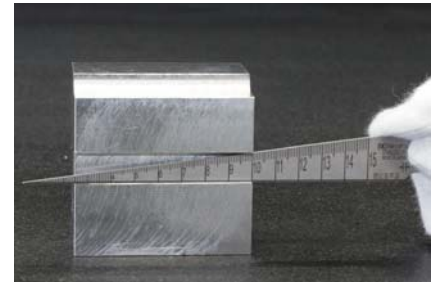
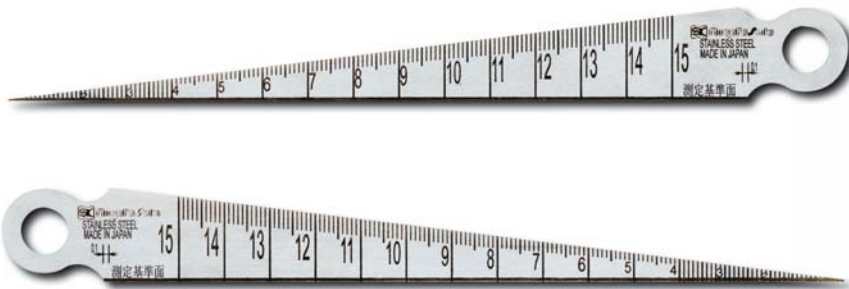
RING GAUGES

THICKNESS GAUGES

TAPER GAUGES

WELDING GAUGES

OTHER GAUGES



- USE**
 - Measurement of groove and gap etc.
- MATERIAL**
 - Hardened stainless steel (SUS420J2)
- FEATURES**
 - Taper gauge specialized for inner width measurements. One side of gauge rests secure along with the workpiece for a stable measurement.
 - Scale is on the side of gauge to allow reading when top surface is not visible during measurement

Order No.	Model No.	Measuring Range (mm)	Accuracy (mm)	Graduation (mm)	Taper Angle	Product Dimensions Full Length x Width (mm)	Weight
NEW 007004	TPG-700T	1~15	±0.05	0.1	7° 9' 10"	148.5	10g

BLOCK GAUGES

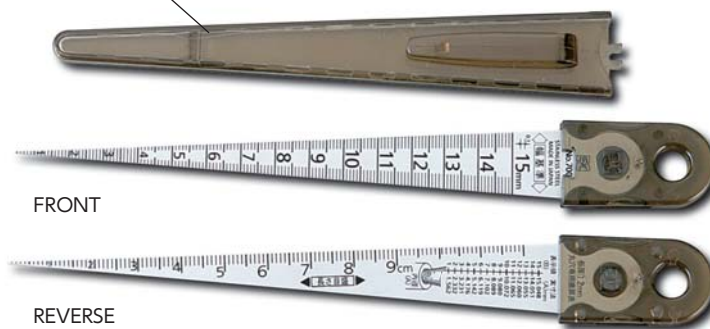
PIN GAUGES

PIN VISE

PIN GAUGE ACCESSORIES

TAPER GAUGES

Clip style plastic case



Perfect for carrying in shirt pocket

- USE**
 - Use the width of taper to measure the gap width
- MATERIAL**
 - Hardened stainless steel (SUS420J2)
 - Hardness : HV480
- FEATURES**
 - Satin finish
 - Reverse side- scale graduated, hole diameter conversion table
 - Pocket clip style carrying case
 - Scale : Front side- Width scale, Reverse side - Length scale

Order No.	Model No.	Standard	Measuring Range (mm)	Accuracy (mm)	Graduation (mm)	Taper Angle	Full Length (mm)	Thickness (mm)	Weight
007008	TPG-700AC	#700 1-15 with Plastic case	1 ~ 15	± 0.05	0.1	7° 9' 10"	148.5	1.2	10g

GAUGES

THREAD GAUGES

PLUG GAUGES

RING GAUGES

THICKNESS GAUGES

TAPER GAUGES

WELDING GAUGES

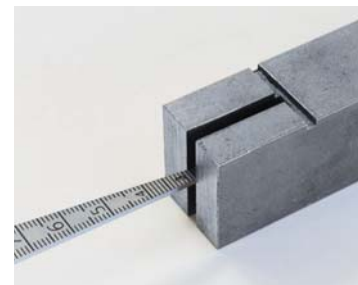
OTHER GAUGES



TPG-700A



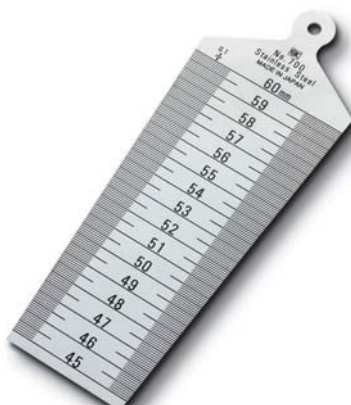
TPG-700B



Measurement of gap width



TPG-700C



TPG-700D

BLOCK
GAUGESPIN
GAUGESPIN
VISEPIN
GAUGE
ACCESSORIES

GAUGES

THREAD
GAUGESPLUG
GAUGESRING
GAUGESTHICKNESS
GAUGESTAPER
GAUGESWELDING
GAUGESOTHER
GAUGES

- USE** • Measure openings, slot width, hole size etc
- MATERIAL** • Hardened stainless steel (SUS420J2)
• Hardness : HV480
- FEATURES** • Satin finish

Order No.	Model No.	Standard	Measuring Range (mm)	Accuracy (mm)	Graduation (mm)	Taper Angle	Full Length (mm)	Thickness (mm)	Weight
007010	TPG-700A	#700 1-15	1 ~ 15	± 0.05	0.1	7° 9' 10"	148.5	1.2	10g
007011	TPG-700B	#700 15-30	15 ~ 30	± 0.05	0.1	7° 9' 10"	153	1.2	40g
007012	TPG-700C	#700 30-45	30 ~ 45	± 0.05	0.1	7° 9' 10"	159	1.2	60g
007013	TPG-700D	#700 45-60	45 ~ 60	± 0.05	0.1	7° 9' 10"	161.5	1.2	80g

TAPER GAUGES



- USE**
 - Measuring of tubing, bore, slot width, hole size and flange face to face dimension, etc.
- MATERIAL**
 - Hardened stainless steel (SUS420J2)
- FEATURES**
 - Convenient set, taper gauge 700A with 130mm ruler
 - Folds safely with pocket clip, easy to carry.

Order No.	Model No.	Standard	Weight
007200	TPG-700S	700S	40g

	Measuring Range (mm)	Accuracy (mm)	Graduation (mm)	Full length (mm)	Taper Angle
Taper gauge	1~ 15	±0.05	0.1	148.5	7° 9' 10"
Ruler	0~130	±0.13	0.5	155	—

BLOCK GAUGES

PIN GAUGES

PIN VISE

PIN GAUGE ACCESSORIES

TAPER GAUGES

GAUGES

THREAD GAUGES

PLUG GAUGES

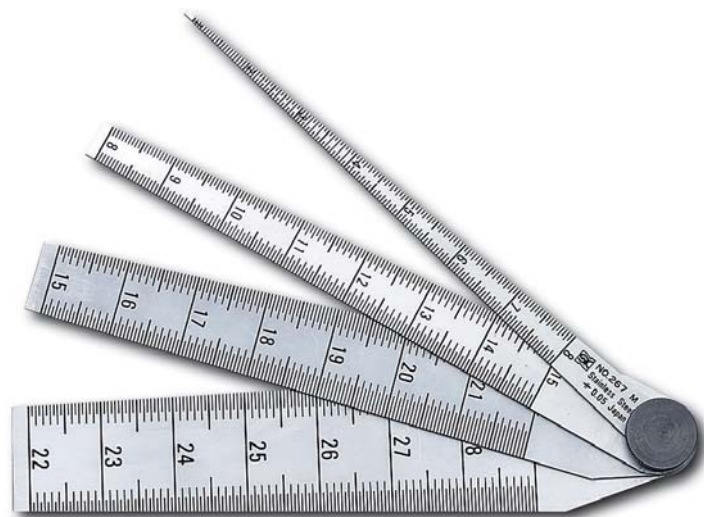
RING GAUGES

THICKNESS GAUGES

TAPER GAUGES

WELDING GAUGES

OTHER GAUGES



- USE**
 - Measurement of slot width and hole size etc.
- MATERIAL**
 - Hardened stainless steel (SUS420J2)
- FEATURES**
 - Use the width of taper to check the inside diameter of tubing or hole size
 - Number of leaves: 4 pieces (1~8mm, 8~15mm, 15~22mm, 22~29mm)

Order No.	Model No.	Standard	Measuring Range (mm)	Accuracy (mm)	Graduation (mm)	Full Length (mm)	Thickness (mm)	Weight
007030	TPG-267M	267M	1~29	±0.05	0.05	144	1.2	80g

CIRCULAR TAPER GAUGES



TPG-710A



TPG-710B



TPG-710C

USE

- Measure hole size or gap width

MATERIAL

- TPG-710A : SK Steel, TPG-710B/710C : Carbon steel for machine structural use
- Grip : Free cutting steel

FEATURES

- Cylindrical type
- Silver finish

Order No.	Model No.	Standard	Measuring Range (mm)	Accuracy (mm)	Graduation (mm)	Taper Angle	Full Length (mm)	Weight
007100	TPG-710A	710A	1 ~ 6	± 0.05	0.1	5° 44'	93	20g
007101	TPG-710B	710B	4 ~ 15	± 0.05	0.1	5° 44'	175	140g
007102	TPG-710C	710C	4 ~ 25	± 0.05	0.1	5° 44'	290	550g

BLOCK GAUGES

PIN GAUGES

PIN VISE

PIN GAUGE ACCESSORIES

CIRCULAR TAPER GAUGES

GAUGES

THREAD GAUGES

PLUG GAUGES

RING GAUGES

THICKNESS GAUGES

TAPER GAUGES

WELDING GAUGES

OTHER GAUGES



TPG-715A

USE

- Use for measuring hole size or gap width

MATERIAL

- Gauge : SK Steel (Non-Hardened)
- Case : Brass

FEATURES

- Silver finish
- Comes with a protective cap for the gauge tip

Order No.	Model No.	Standard	Measuring Range (mm)	Accuracy (mm)	Graduation (mm)	Taper Angle	Full Length (mm)	Weight
007150	TPG-715A	715A	0.1 ~ 3	± 0.05	0.1	5° 43' 29"	118.5	33g
007151	TPG-715B	715B	1 ~ 6	± 0.05	0.1	5° 43' 29"	168	80g

CIRCULAR TAPER GAUGE WITH GREEN COLOR GRIP



New line-up with Green Aluminum Grip



CGTPG-710A



CGTPG-710B



CGTPG-710C

USE • Measure hole size or gap width

MATERIAL

- Gauge : SK steel (CGTPG-710A), Carbon steel for machine structure use (CGTPG-710B & CGTPG-710C)
- Grip : Anodized aluminum

FEATURES

- Silver finish

Order No.	Model No.	Standard	Measuring Range (mm)	Accuracy (mm)	Graduation (mm)	Taper Angle	Full Length (mm)	Weight
007103	CGTPG-710A	710A	1 ~ 6	± 0.05	0.1	5° 44'	93	20g
007104	CGTPG-710B	710B	4 ~ 15	± 0.05	0.1	5° 44'	175	140g
007105	CGTPG-710C	710C	4 ~ 25	± 0.05	0.1	5° 44'	290	550g

CIRCULAR TAPER GAUGE WITH GREEN COLOR CASE



New line-up. Circular taper gauge with green case



CCTPG-715A

USE • Use for measuring hole size or gap width

MATERIAL

- Gauge : SK steel
- Anodized aluminum

FEATURES

- Comes with a protective cap for the gauge tip

Order No.	Model No.	Standard	Measuring Range (mm)	Accuracy (mm)	Graduation (mm)	Taper Angle	Full Length (mm)	Weight
007152	CCTPG-715A	715A	0.1 ~ 3	± 0.05	0.1	5° 43' 29"	118.5	33g
007153	CCTPG-715B	715B	1 ~ 6	± 0.05	0.1	5° 43' 29"	168	80g



SLIDE TAPER GAUGES



06

BLOCK GAUGES

PIN GAUGES

PIN VISE

PIN GAUGE ACCESSORIES

GAUGES

THREAD GAUGES

PLUG GAUGES

RING GAUGES

THICKNESS GAUGES

TAPER GAUGES

WELDING GAUGES

OTHER GAUGES



Clip-style slide case

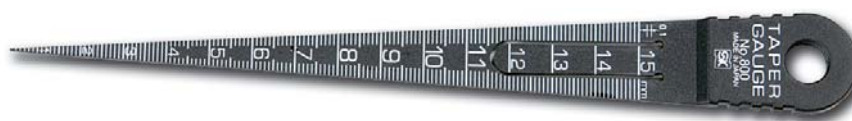


Perfect for carrying in shirt pocket

- USE**
 - Measurement of tubing, bore, slot width, hole size etc.
- MATERIAL**
 - Hardened stainless steel (SUS420J2)
 - Hardness : HV480
- FEATURES**
 - Satin finish
 - Clip-type slide case for safe and convenient carrying
 - Gauge tip is rounded for safety
 - Slide into case for storage

Order No.	Model No.	Standard	Measuring Range (mm)	Accuracy (mm)	Graduation (mm)	Taper Angle	Weight
007201	TPG-700SL	700SL	1~9	±0.05	0.1	7°9'10"	20g

PLASTIC TAPER GAUGES



can put in a pocket

- USE**
 - Measure openings, slot width, hole size, etc.
- MATERIAL**
 - Polycarbonate
- FEATURES**
 - Scratch resistant
 - Clip design

Order No.	Model No.	Standard	Measuring range (mm)	Accuracy (mm)	Graduation (mm)	Weight
007040	TPG-800	800	1~15	±0.2	0.1	5g