

Order Code	Description
<input checked="" type="checkbox"/> UTGCLF1	PosiTector Standard with UTG CLF Probe
<input type="checkbox"/> UTGCLF3	PosiTector Advanced with UTG CLF Probe

PosiTector® *UTG*

Ultrasonic Thickness Gage

Compare PosiTector Gage Bodies

Features	Standard	Advanced
NEW Larger 2.8" impact resistant color touchscreen with redesigned keypad for quick menu navigation	●	
HiLo alarm—Audibly and visibly alerts when measurements exceed your specified limits	●	●
Min Scan mode—take continuous readings and record min/max thicknesses—ideal for quick inspection over a large area	●	●
A Scan—with adjustable Gain and screen capture for further analysis and documentation		●
B Scan—displays a cross sectional profile of the test material		●
Live graphing of measurement data		●
NEW Touchscreen keyboard for quickly renaming batches, adding notes, and more		●
NEW Prompted Batch Mode—create pre-defined batches with on-screen text and image prompts for each reading		●
Statistics Mode—Instantly calculate average, standard deviation, min/max thickness and number of readings while measuring	●	●
Two year warranty on body AND probe	●	●
Reading Storage Capacity	1,000 per probe	250,000 in up to 1,000 batches
Connection Options		
USB port for fast, simple connection to a PC and to supply continuous power. USB cable included.	●	●
WiFi technology wirelessly synchronizes with PosiSoft.net and downloads software updates		●
Bluetooth 4.0 Technology for data transfer to a mobile device running the PosiTector App or optional portable printer. BLE API available for integration into third-party software.		●



PosiTector UTG CLF1



Removable Cabled Probe	Probe Model UTG CLF	
	Probe Type:	2.25 MHz Dual Element
	Thru-Paint Capability (Multiple Echo):	No
	*Measurement Range - Single Echo:	0.080" to 5.000" 2.00 to 125.00 mm
	Resolution:	0.001" 0.01 mm
	*Accuracy:	±0.001" ±0.03 mm

*Measurement range is for carbon steel and depends upon surface condition, temperature, and material.

UTG CLF Probe measures the wall thickness of materials such as steel, plastic, and more. Ideal for measuring the effects of corrosion or erosion on tanks, pipes, or any structure where access is limited to one side.

- 2.25 MHz dual element transducer cabled probe
- Designed for measuring attenuative materials such as cast iron
- Proprietary algorithm distinguishes back wall reflections from grain noise (reflections) found in cast materials

©DeFelsko Corporation USA 2021. All Rights Reserved. Technical Data subject to change without notice. • PUTG.v.LW/W2107

Order Code	Description
<input checked="" type="checkbox"/> UTGCLF1	PosiTector Standard with UTG CLF Probe
<input type="checkbox"/> UTGCLF3	PosiTector Advanced with UTG CLF Probe

All Gages Feature...

Simple

- Pre-programmed velocities—simply select from a list of common materials or enter a custom value with ease
- SmartCouple™ mode eliminates unintentional decoupling—ensures continuous measurements on scaled or pitted surfaces—ideal for analyzing large areas using multiple passes
- **NEW** Larger 2.8" impact resistant color touchscreen with redesigned keypad for quick menu
- **NEW** On-gage help explains menu items at the touch of a button
- RESET feature instantly restores factory settings

Durable

- **NEW** Weatherproof, dustproof, and water-resistant—IP65-rated enclosure
- **NEW** Ergonomic design with durable rubberized grip
- Shock-absorbing protective rubber holster for added impact resistance
- Two year warranty on gage body AND probe

Accurate

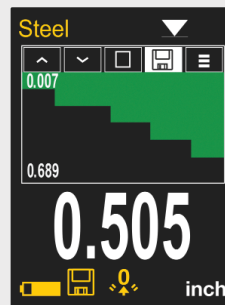
- Precision transducers provide fast, accurate readings
- Certificate of Calibration showing traceability to NIST included
- Built-in temperature compensation ensures measurement accuracy
- Conforms to national and international standards including ASTM E797

Versatile

- Selectable display languages
- **NEW** Auto rotating display with Flip Lock

Powerful

- Min Scan mode—take continuous readings and record min/max thicknesses—ideal for quick inspection over a large area
- Continually displays/updates average, standard deviation, min/max, and number of readings while measuring
- **NEW** Screen Capture—save 100 screen images for record keeping and review
- **NEW** Instant-on feature quickly powers up the gage if recently powered down
- **NEW** Up to 30% longer battery life
- USB port for fast, simple connection to a PC and to supply continuous power. USB cable included.
- Every stored measurement is date and time stamped
- Includes PosiSoft suite of software for viewing and reporting data (see page 3) for a complete overview of these options.



Advanced Models Feature A-Scan & B-Scan

A-Scan with adjustable Gain and screen capture. UTG M and UTG P probes include dual cursors to measure the distance between echoes.

B-Scan—displays a cross sectional profile of the test material (*shown on left*)

Award Winning Compatibility!

PosiTector body accepts all PosiTector *UTG, 6000, 200, RTR, SPG, DPM, SST, and SHD* probes easily converting from an ultrasonic wall thickness gage to a coating thickness gage, dew point meter, surface profile gage, soluble salt tester, or hardness tester.



Comes complete with PosiTector gage body, UTG CLF probe, couplant (ultrasonic gel), protective rubber holster, wrist strap, 3 AAA alkaline batteries, instructions, protective lens shield, convenient carrying case, Long Form Certificate of Calibration traceable to NIST or PTB, USB cable, PosiSoft Software, two (2) year warranty.

***SIZE:** 127 x 66 x 25.4 mm (5" x 2.6" x 1")

***BODY WEIGHT:** 137 g (4.9 oz.) without batteries

CONFORMS TO: ASTM E797

*Size and weight are for the PosiTector gage body only and do not include the probe.

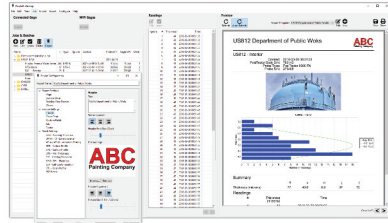
PosiSoft® Suite of Software

Four FREE and unique ways to view and report your PosiTector and PosiTest data

PosiSoft Desktop — PC/Mac

Powerful desktop software for downloading, viewing, printing, and archiving measurement data. No internet connection required.

- **NEW** Import readings directly from the gage via WiFi, USB, or from legacy PosiSoft desktop versions
- **NEW** Updated design and functionality
- Synchronize measurement data including readings, notes, and pictures between PosiSoft Desktop, PosiTector App and PosiSoft.net
- Import/Export Templates and Job Folders to share with other users
- **NEW** Drag and Drop **Custom Fields**—import PDF forms and overlay fields easily for automatic population of inspection and measurement data
- Report preview automatically refreshes as changes are made



Prompted Batch Mode

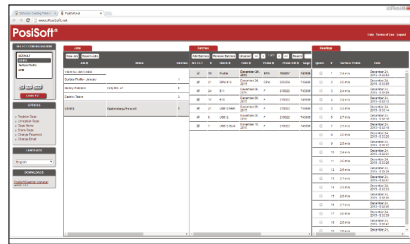
Create pre-defined batches with onscreen text and image prompts for each reading and upload to PosiTector 6000, 200, and UTG gages (*Advanced models only*).

- Ideal for ensuring a consistent measurement pattern for repetitive jobs or when specific measurement locations are required
- Create and store multiple templates for different jobs

PosiSoft.net — Web based

A web-based application offering secure, centralized management of readings. Access your data from any web-connected device.

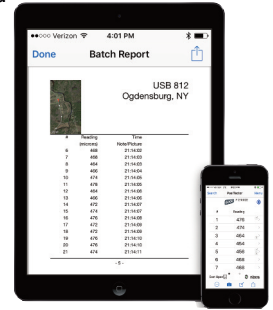
- Synchronize data when connected via USB or WiFi
- Synchronize measurement data including readings, notes, and pictures with PosiSoft Desktop and PosiTector App
- Securely store measurement data in the cloud and share with authorized users via a secure login



PosiTector App — Mobile

Mobile app connects PosiTector Advanced instruments, the PosiTector SmartLink, and the PosiTest AT-A to your *iOS* or *Android* smart device.

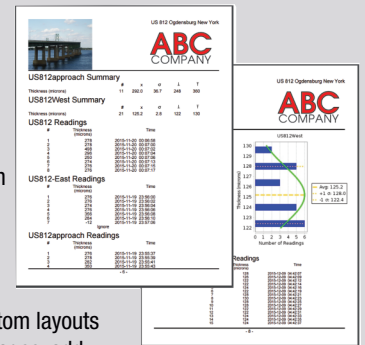
- Auto pairing Bluetooth BLE connection
- Automatically generate user-formatted reports and share via email, text, cloud storage services like Dropbox, and more
- Export readings to PosiSoft Desktop or synchronize readings to and from PosiSoft.net for further reporting and archival options



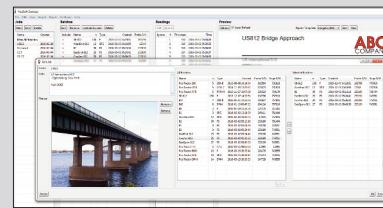
PosiSoft Custom PDF Report Generator

Easily create reports from your measurement data in seconds.

featured on
PosiSoft Desktop
PosiSoft.net
PosiTector App

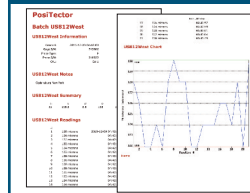


- Include inspection information such as on-site pictures, screen captures, notes, and more to communicate important details
- Create and save multiple custom layouts as templates—insert cover pages, add logos/images, and select font and point size
- Select the information to include for each product type—charts, histograms, readings, time stamps, and more
- Compile multi-batch reports from one or more probes and instrument types
- Export readings as comma separated value (.CSV) files which can easily be imported into Excel and other supporting applications



Folders feature consolidates batches into groups to keep measurement data organized and to quickly create multi-batch reports (not available on PosiTector App).

PosiSoft USB Drive — Gage based



A simple gage interface to retrieve data in a manner similar to USB flash drives or cameras. No software to install or internet connection required.

- View and print readings and graphs using universal PC/Mac web browsers and file explorers
- Measurement data can be printed quickly from a formatted HTML report or exported in .CSV format for further analysis in spreadsheets
- Simple file management—Copy and paste measurement data from the PosiTector to a local folder on your computer, network folder, or cloud drive
- Access stored screen captures (snapshots) of the PosiTector display



PosiTector and PosiTest AT-A instruments can integrate with third-party software, drones, ROVs, PLCs, and robotic devices using several industry-standard communication protocols.

PosiTector Developer Resources

including Bluetooth 4.0, WiFi, Keyboard Mode, and USB Serial

©DeFelsko Corporation USA 2021. All Rights Reserved. Technical Data subject to change without notice. • Printed in USA • PSoft.v.LW/W2104

DeFelsko
Inspection Instruments

DeFelsko Corporation • 800 Proctor Ave. • Ogdensburg, New York 13669-2205 USA
Toll Free 1-800-448-3835 • Tel: +1-315-393-4450
techsale@defelsko.com • www.defelsko.com

Made in U.S.A.