

# Counterbore I 051511

For medium through bore

**Design:**

Diameter:

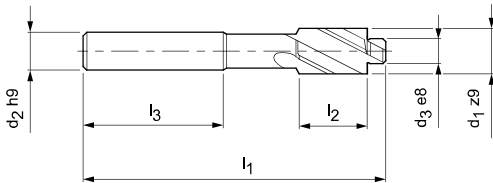
6,00-20,00 mm

Cutting direction:

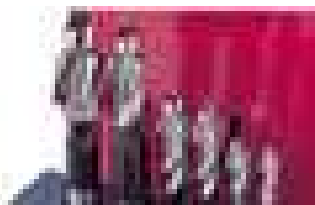
Right-hand cutting

Cutting material:

HSS, uncoated



Dimensions							z	Order No.
d <sub>1</sub> z9	d <sub>2</sub> h9	d <sub>3</sub> e8	Thread	l <sub>1</sub>	l <sub>2</sub>	l <sub>3</sub>		
6,00	5	3,4	M3	71	14	31,5	3	30165317
6,50	5	3,4	M3	71	14	31,5	3	30111339
6,50	5	3,9	M3,5	71	14	31,5	3	30111341
8,00	5	4,5	M4	71	14	31,5	3	30111343
10,00	8	5,5	M5	80	18	35,5	3	30111345
11,00	8	6,6	M6	80	18	35,5	3	30111347
15,00	12,5	9	M8	100	22	40	3	30111349
18,00	12,5	11	M10	100	22	40	3	30111351
20,00	12,5	13,5	M12	100	22	40	3	30111353



**Counterbore-Set for medium through bore  
051514, with metal cassette, uncoated**

Set	Thread	Order No.
6 pieces	M3, M4, M5, M6, M8, M10	30111372

Dimensions in mm.

# Counterbore | 053511

For medium through bore

**Design:**

Diameter:

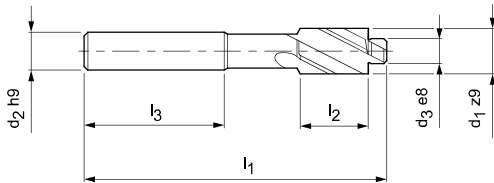
6,00-20,00 mm

Cutting direction:

Right-hand cutting

Cutting material:

HSS, TiN coated



Dimensions							z	Order No.
d <sub>1</sub> z9	d <sub>2</sub> h9	d <sub>3</sub> e8	Thread	l <sub>1</sub>	l <sub>2</sub>	l <sub>3</sub>		
6,00	5	3,4	M3	71	14	31,5	3	30117762
6,50	5	3,4	M3	71	14	31,5	3	30117763
8,00	5	4,5	M4	71	14	31,5	3	30117764
10,00	8	5,5	M5	80	18	35,5	3	30117765
11,00	8	6,6	M6	80	18	35,5	3	30117766
15,00	12,5	9	M8	100	22	40	3	30117767
18,00	12,5	11	M10	100	22	40	3	30117768
20,00	12,5	13,5	M12	100	22	40	3	30117769