



An inspection certificate is supplied as standard. Refer to page U-11 for details.

## Functions

- Peak detection (MAX/MIN)
- Runout (MAX - MIN) Hold
- Note: Peak detection
  - 1) Sampling rate: 50 readings/sec
  - 2) Capturing speed: 50  $\mu$ m/sec (max.)
- Zeroret (INC system)
- Preset function (ABS system)
- Counting direction switching
- Tolerance judgment (P1, P2, P3, and INC can be stored)
- Resolution selection
- Simple calculation  $f(x) = Ax$
- Analog bar resolution selection
- Key lock
- in/mm conversion (inch/mm models)
- Display hold (when no external device is connected)
- Data output
- External PC setting input
- Display rotation (330°)
- Low battery voltage alarm display
- Error alarm display

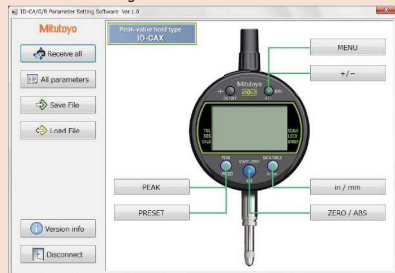
## Optional Accessories

- Lifting
    - Lifting lever
      - 21EZA198** (ISO/JIS Type),
      - 21EZA199** (ASME/ANSI/AGD Type)
    - Lifting cable **21JZA295**
    - Lifting knob
      - 21EZA105** (ISO/JIS Type),
      - 21EZA150** (ASME/ANSI/AGD Type)
  - SPC Cable:
    - 905338** (1 m)
    - 905409** (2 m)
    - (Refer to pages A-27 to A-29 for details.)
  - USB Input Tool Direct (2 m): **06AFM380F**
  - Input Tool Series
    - IT-016U** (USB Keyboard Signal Conversion Type):
    - 264-016-10**
    - IT-007R** (RS-232C Communication Conversion Type):
    - 264-007**
    - (Refer to page A-14 for details.)
  - Connecting Cables for **U-WAVE-T** (160 mm):
  - 02AZD790F**
  - For foot switch: **02AZE140F**
  - (Refer to pages A-19 to A-21 for details.)
  - Digimatic Mini-Processor **DP-1VA LOGGER: 264-505**
  - Parameter setup kit: **21EZA313**
- Note: Parameter setting software (can be downloaded for free from the Mitutoyo website) is also required.



Parameter setup kit

## Parameter setting software



- Contact points for Mitutoyo's dial indicators (Refer to pages F-57 to F-60 for details.)
- Interchangeable backs for 2 series (Refer to page F-61 for details.)
- Measuring stands (Refer to pages F-84 to F-91 for details.)

# Digimatic Indicators

Comparison measuring instruments which ensure high quality, high accuracy and reliability.

## ABSOLUTE Digimatic Indicator ID-C SERIES 543 — Peak-Value Hold Type

MeasurLink<sup>®</sup> **ENABLED**  
Data Management Software by Mitutoyo

- Run-out/MAX-MIN Hold function enables GO/ $\pm$ NG judgment\*1 for peak or difference values.
- Five buttons, status icons, and clear button indications allow for easy operation of a wide variety of functions.
- Wide LCD and new analog bar graph are now standard on all models.
- The ABS (absolute) scale restores the last origin position\*2 automatically when the indicator is turned on, and realizes high reliability by eliminating over-speed errors.
- By using the parameter setup kit (optional) and the dedicated software, the functions and the parameters can be configured using a computer.
- Equipped with a data output port that enables incorporation into measurement networking and statistical process control systems. (Refer to page A-3)

\*1 Tolerance judgment results cannot be output.

\*2 Regarding origin setting, refer to "Origin Setting of Digimatic Indicators" on page F-25.



543-300/543-300B

## SPECIFICATIONS

Metric											
Order No. (w/lug, flat-back)	Range (mm)	Resolution (mm)	Maximum permissible error (mm)			Measuring force MPL (N)	Power supply	Battery life (normal use)*4	Net mass (g)		
			MPE <sub>E</sub> *3	Hysteresis MPE <sub>H</sub>	Repeatability MPE <sub>R</sub>						
543-300	12.7	0.001 / 0.01 (selectable)	0.003	0.002	0.002	1.5 or less	CR2032x1 pc.	Approx. 1 year		180	
543-300B										170	

Inch / Metric											
Order No. (w/lug, flat-back)	Range	Resolution	Maximum permissible error			Measuring force MPL (N)	Power supply	Battery life (normal use)*4	Net mass (g)		
			MPE <sub>E</sub> *3	Hysteresis MPE <sub>H</sub>	Repeatability MPE <sub>R</sub>						
543-301	0.5 in / 12.7 mm	0.00005 / 0.0001 / 0.0005 in, 0.001 / 0.01 mm (selectable)	±0.00010 in / 0.003 mm	0.00010 in / 0.002 mm	0.00010 in / 0.002 mm	1.5 or less	CR2032x1 pc.	Approx. 1 year		180	
543-301B										170	
543-302										195	
543-302B										170	

\*3 Error of indication for the total measuring range

\*4 Applies only if not connected to a data processor. Battery life depends on use of the indicator. Use the above value as a guide only. Note: Products with an Order No. suffixed "B" have a flat back.

# Digimatic Indicators

Comparison measuring instruments which ensure high quality, high accuracy and reliability.

## DIMENSIONS

