

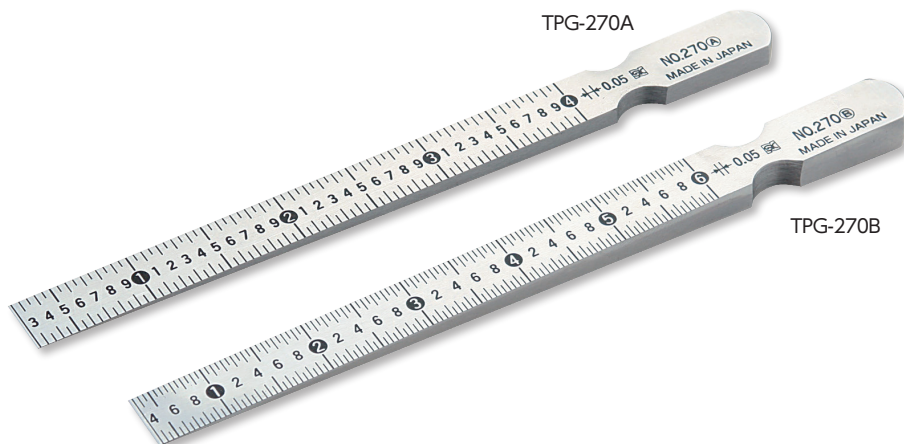
TAPER GAUGE



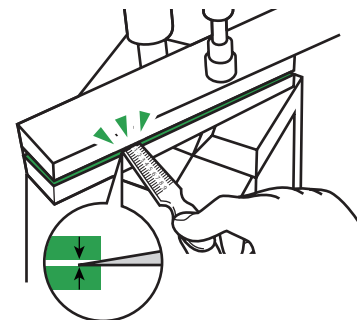
HOW TO MOVE

For measuring narrower gap ▶
Thickness Gauge
P88
~90

Rust prevention ▶
Zerust Film for Steel
P380



Graduation shows the gap width



USE

- For measurement of groove and gap etc.

MATERIAL

- Carbon steel for machine structural use, non-hardened

FEATURES

- Each number marked on the gauge shows gauge thickness of its point which enables to measure width of inner gap
- Satin finish
- Packed in plastic carrying case

Order No.	Model No.	Standard	Measuring Range (mm)	Accuracy (mm)	Graduation (mm)	Taper Angle	Full Length H×W (mm)	Weight
007000	TPG-270A	270A	0.3~4	±0.04	0.05	1°54'33"	158×12	95g
007001	TPG-270B	270B	0.4~6	±0.04	0.05	2°51'45"	158×12	95g

BLOCK GAUGE

PIN GAUGE

PIN VISE

PIN GAUGE ACCESSORIES

RING GAUGE

PLUG GAUGE

LIMIT GAUGE

THICKNESS GAUGE

TAPER GAUGE

WELDING GAUGE

OTHER GAUGES

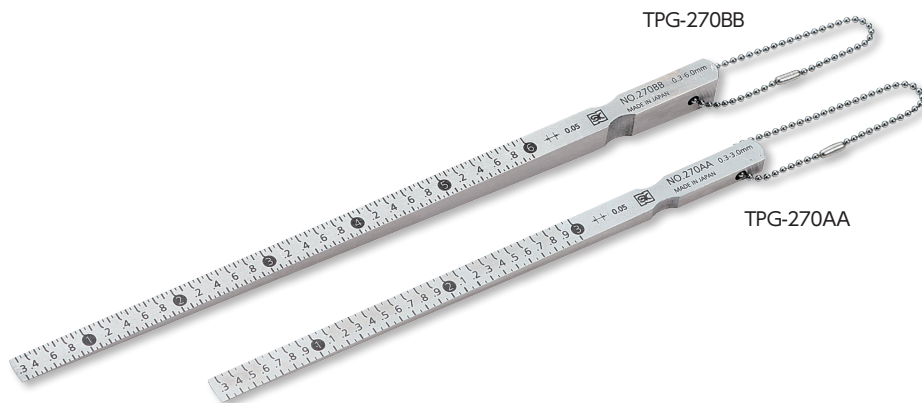
TAPER GAUGE NARROW WIDTH TYPE



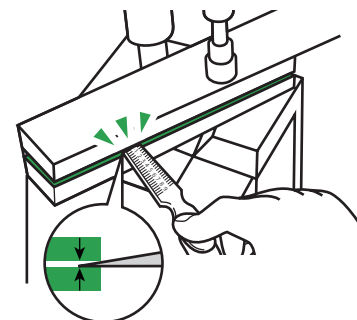
HOW TO MOVE

For measuring narrower gap ▶
Thickness Gauge
P88
~90

Rust prevention ▶
Zerust Film for Steel
P380



Graduation shows the gap width



USE

- For measurement of groove and gap etc.
- For use as a height adjustment jig

MATERIAL

- Carbon steel for machine structural use, non-hardened

FEATURES

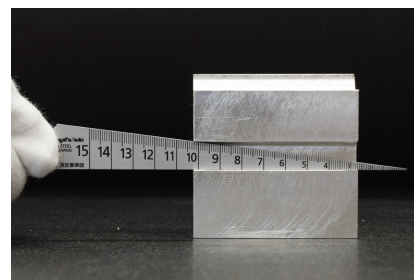
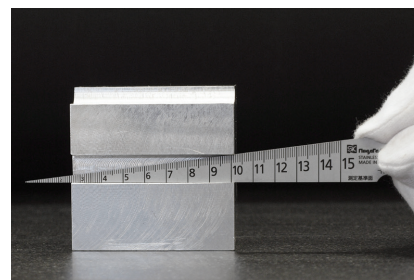
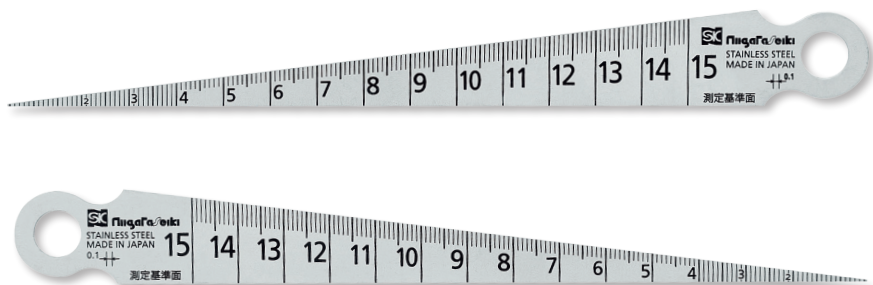
- Each number marked on the gauge shows gauge thickness of its point which enables to measure width of inner gap
- Narrow width type
- Satin finish
- Packed in plastic carrying case
- Ball chain attached

Order No.	Model No.	Standard	Measuring Range (mm)	Accuracy (mm)	Graduation (mm)	Taper Angle	Full Length H×W (mm)	Weight
007002	TPG-270AA	270AA	0.3~3	±0.04	0.05	1°54'33"	127.5×6	18g
007003	TPG-270BB	270BB	0.3~6	±0.04	0.05	2°51'45"	160 ×6	38g

RIGHT ANGLE TAPER GAUGE



HOW TO MOVE



USE

- For measurement of groove and gap etc.

MATERIAL

- Hardened stainless steel

FEATURES

- Taper gauge specialized in inner width measurements
 - One side of gauge rests secure along with the workpiece for a stable measurement
- The scale is designed to be read easily from the side when the gap to be measured is not visible from above

Order No.	Model No.	Measuring Range (mm)	Accuracy (mm)	Graduation (mm)	Taper Angle	Full Length (mm)	Weight
007004	TPG-700T	1~15	±0.05	0.1	7° 9' 10"	148.5	10g

BLOCK GAUGE

PIN GAUGE

PIN VISE

PIN GAUGE ACCESSORIES

RING GAUGE

PLUG GAUGE

LIMIT GAUGE

THICKNESS GAUGE

TAPER GAUGE

WELDING GAUGE

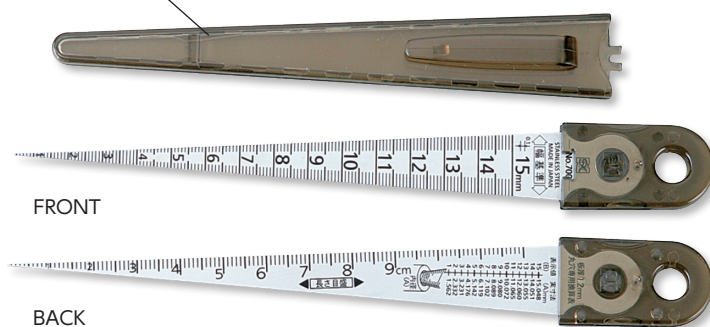
OTHER GAUGES

TAPER GAUGE



HOW TO MOVE

Clip style plastic case



Wide Measuring Range 1-29mm ▶ Taper Gauge TPG-267M P94	Slide case for convenient carrying ▶ Slide Taper Gauge P95
Made of polycarbonate ▶ Plastic Taper Gauge K Aidan P95	130mm scale set ▶ Taper Gauge with Scale P96



Perfect for carrying in shirt pocket

USE

- For measurement of groove, gap, hole diameter etc.

MATERIAL

- Hardened stainless steel
- Hardness: HV480

FEATURES

- Satin finish
- Back side- scale graduated and hole diameter conversion table
- Pocket clip style carrying case
- Front - Width scale, Back - Length scale

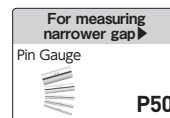
Order No.	Model No.	Standard	Measuring Range (mm)	Accuracy (mm)	Graduation (mm)	Taper Angle	Full Length (mm)	Thickness (mm)	Weight
007008	TPG-700AC	#700 1-15 with Plastic case	1 ~ 15	± 0.05	0.1	7° 9' 10"	148.5	1.2	10g

TAPER GAUGE



HOW TO MOVE

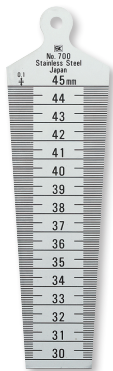
Quick size measurement of groove and gap



TPG-700A



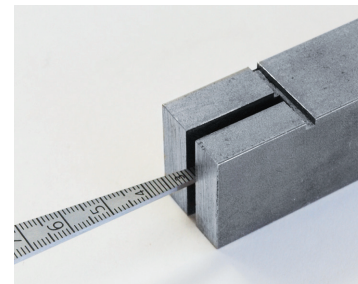
TPG-700B



TPG-700C



TPG-700D



Measurement of gap width

USE

- For measurement of groove, gap, hole diameter etc.

MATERIAL

- Hardened stainless steel ● Hardness: HV480

FEATURES

- Satin finish

Order No.	Model No.	Standard	Measuring Range (mm)	Accuracy (mm)	Graduation (mm)	Taper Angle	Overall Length (mm)	Thickness (mm)	Weight
007010	TPG-700A	#700 1-15	1 ~ 15	± 0.05	0.1	7° 9' 10"	148.5	1.2	10g
007011	TPG-700B	#700 15-30	15 ~ 30	± 0.05	0.1	7° 9' 10"	153	1.2	40g
007012	TPG-700C	#700 30-45	30 ~ 45	± 0.05	0.1	7° 9' 10"	159	1.2	60g
007013	TPG-700D	#700 45-60	45 ~ 60	± 0.05	0.1	7° 9' 10"	161.5	1.2	80g



BLOCK GAUGE

PIN GAUGE

PIN VISE

PIN GAUGE ACCESSORIES

RING GAUGE

PLUG GAUGE

LIMIT GAUGE

THICKNESS GAUGE

TAPER GAUGE

WELDING GAUGE

OTHER GAUGES

SHORT TAPER GAUGE SET/ SINGLE PART



HOW TO MOVE

No need to cut-off the existing taper gauge.
Suitable for measuring shallow gap



TPG-511



TPG-0515S

USE

- For measurement of groove, gap, hole diameter etc.

MATERIAL

- Stainless steel ● Hardness: HV300

FEATURES

- Suitable for measuring shallow gap
- With ball chain
- TPG-0515S is set of 0.5~7.0mm, 5.0~11.0mm and 9.0~15.0mm

Order No.	Model No.	Measuring Range (mm)	Accuracy (mm)	Graduation (mm)	Taper Angle	Overall Length (mm)	Thickness (mm)	Weight
111422	TPG-057	0.5 ~ 7.0	± 0.1	0.1	7° 9' 10"	72.8	1.2	6g
111423	TPG-511	5.0 ~ 11.0				68.8		9g
111424	TPG-915	9.0 ~ 15.0				72.8		11g
111425	TPG-0515S	0.5 ~ 15.0				72.8		20g

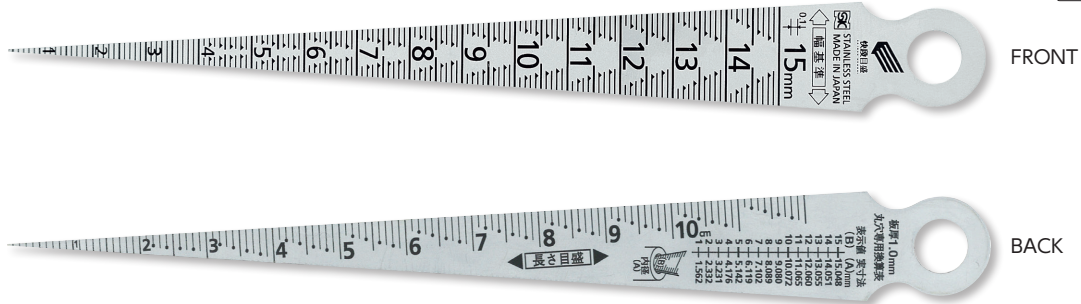
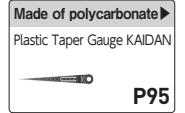


TAPER GAUGE KAIDAN



HOW TO MOVE

New stepped millimeter graduation prevents misreading



USE

- For measurement of groove, gap, hole diameter etc.

MATERIAL

- Hardened stainless steel
- Hardness: HV480

FEATURES

- Increasing height of each mark makes it easier for eye to distinguish 0.1mm steps
- Sequential number style can be read directly without checking the surrounding numbers, 0.2mm point markings
- Satin finish
- Front: width scale
- Back: length scale with a conversion table

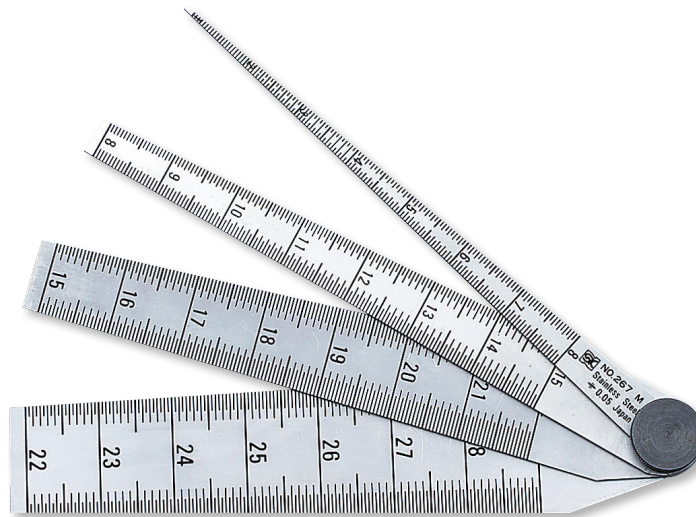
Order No.	Model No.	Measuring Range (mm)	Accuracy (mm)	Graduation (mm)	Taper Angle	Full Length (mm)	Thickness (mm)	Weight
007211	TPG-700AKD	1 ~ 15	± 0.05	0.1	7° 9' 10"	148.5	1.0	10g

TAPER GAUGE



HOW TO MOVE

Four different sizes of gauges in one set, enables to measure 1 ~ 29mm gap



USE

- For measurement of groove, gap, hole diameter etc.

MATERIAL

- Hardened stainless steel
- Hardness: HV480

FEATURES

- Satin finish
- Number of leaves: 4 pieces (1~8mm, 8~15mm, 15~22mm, 22~29mm)

Order No.	Model No.	Standard	Measuring Range (mm)	Accuracy (mm)	Graduation (mm)	Full Length (mm)	Thickness (mm)	Weight
007030	TPG-267M	267M	1~29	±0.05	0.05	144	1.2	80g

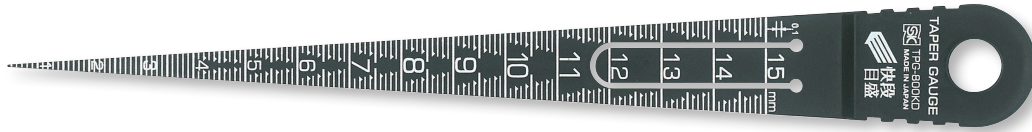


PLASTIC TAPER GAUGE KAIDAN



HOW TO MOVE

Polycarbonate material allows scratch-free contact to measuring objects



Stepped millimeter graduation prevents misreading



can put in a pocket

USE

- For measurement of groove, gap, hole diameter etc.

MATERIAL

- Polycarbonate

FEATURES

- Scratch resistant
- Clip design

Order No.	Model No.	Standard	Measuring Range (mm)	Accuracy (mm)	Graduation (mm)	Full Length (mm)	Weight
007212	TPG-800KD	800	1~15	±0.2	0.1	158	5g



BLOCK GAUGE

PIN GAUGE

PIN VISE

PIN GAUGE ACCESSORIES

RING GAUGE

PLUG GAUGE

LIMIT GAUGE

THICKNESS GAUGE

TAPER GAUGE

WELDING GAUGE

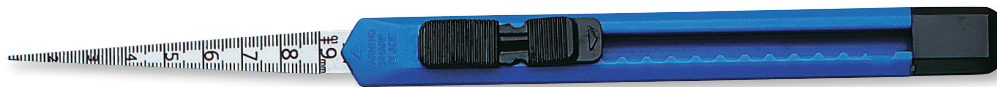
OTHER GAUGES

SLIDE TAPER GAUGE



HOW TO MOVE

Clip-type slide case for safe and convenient carrying



USE

- For measurement of groove, gap, hole diameter etc.

MATERIAL

- Hardened stainless steel
- Hardness: HV480

FEATURES

- Satin finish
- Clip-type slide case for safe and convenient carrying
- Gauge tip is rounded for safety
- Slide into case for storage

Clip-style slide case



Perfect for carrying in shirt pocket

Order No.	Model No.	Standard	Measuring Range (mm)	Accuracy (mm)	Graduation (mm)	Taper Angle	Weight
007201	TPG-700SL	700SL	1~9	±0.05	0.1	7° 9' 10"	20g

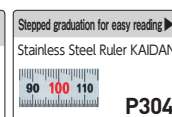
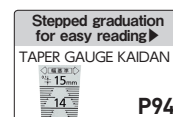


TAPER GAUGE WITH KAIDAN SCALE

Convenient set, taper gauge 700A with 130mm scale



HOW TO MOVE



FRONT



BACK



With pocket clip, easy to carry

USE

- For measurement of groove, gap, hole diameter and length

MATERIAL

- Hardened stainless steel

FEATURES

- Convenient set, taper gauge 700A with 130mm scale. Folds safely with pocket clip, easy to carry.
- 130mm scale with 1mm Kaidan graduation on the back for convenient use
- Satin finish

Order No.	Model No.	Weight
007205	TPG-700SKD	40g

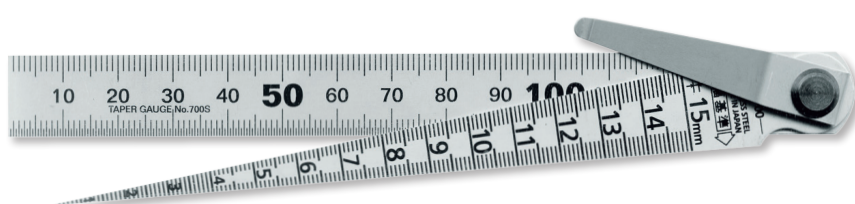
	Measuring Range (mm)	Accuracy (mm)	Graduation (mm)	Full Length (mm)	Taper Angle
Taper Gauge	1~ 15	±0.05	0.1	148.5	7° 9' 10"
Scale	0~130	±0.13	1	155	—

TAPER GAUGE

Convenient set, taper gauge 700A with 130mm scale



HOW TO MOVE



With pocket clip, easy to carry

USE

- For measurement of groove, gap, hole diameter and length

MATERIAL

- Hardened stainless steel

FEATURES

- Convenient set, taper gauge 700A with 130mm scale. Folds safely with pocket clip, easy to carry.
- Satin finish

Order No.	Model No.	Standard	Weight
007200	TPG-700S	700S	40g

	Measuring Range (mm)	Accuracy (mm)	Graduation (mm)	Full Length (mm)	Taper Angle
Taper Gauge	1~ 15	±0.05	0.1	148.5	7° 9' 10"
Scale	0~130	±0.13	0.5	155	—